

Triranga Infra

A Better Way To Build Boundary



Mfg. Of Rcc Precast Boundary Wall.
AN ISO 9001 : 2008 CERTIFIED CO.

Corporate Office : 6, 5th Floor, Kalapunam Building, Above Citi Bank,
Nr. Municipal Maket, CG Road, Ahmedabad, Gujarat - 380009

Website: www.trirangainfra.com **Email:** info@trirangainfra.com



Introduction / Company Profile :

- We Triranga Group Of Industries Introduce Ourselves As That Cares For Quality Products With The Culture Of Deep Dedication To Work, Determination To Succeed, Today Our Company Enjoys A Premium Position Among A Few
- We Are One of The Largest Manufacturer Of Prefabricated Rcc Precast Compound Walls With Different Designs As Well As Garden Curbing, Security Cabins, Labor Quarters Etc., As Per Customers' Requirements.
- Our Products Are Manufactured Under Stringent Norms And The Raw Materials Procured From Reputed Manufacturers And Suppliers Are Accepted Through Rigorous Quality Control Norms. All These Have Enabled Us To Maintain A Host Of Clients.
- We continue to give India Cost-effective, Durable, Maintenance-free, Aesthetic, User-friendly and eco-friendly Precast Concrete Solutions.

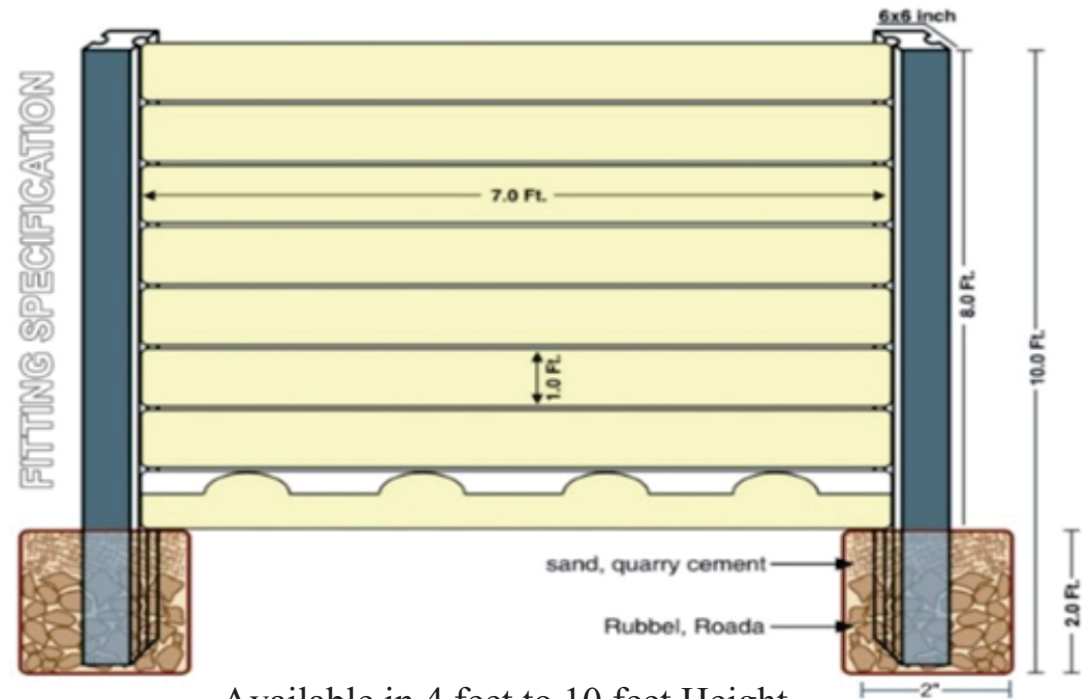


Overview of Compound Wall :

- Basic Design of 8 Feet Height Precast/folding Compound Wall.

Our Wall can withstand load As Follows:

- Basic Wind Speed 150KMPH
- Wind Load 11.14 PSI
- Horizontal Load 12.8 PSI



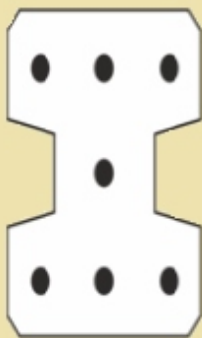
Available in 4 feet to 10 feet Height

Dimensions & Reinforcement:

150x150mm vertical 'I' section Column with 55mm grew.
Length is depend on customer's requirement.
It has two side grew, where we can easily filled the planks.
Post shall be reinforced with 7 roads High tensile steel twist wires of 4mm/3mm which is manufacturing with stressing system.

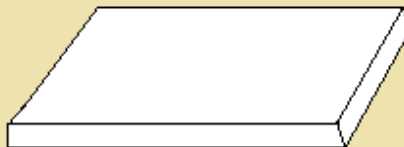
Prestressed Precast RCC Column Plan (Beam)

4 mm High Tensle Wire
(7 NOS)



Prestressed Precast RCC Panel Plan (Plank)

3mm High Strong (HTC Wire) M25 Grade
(3 NOS)



- Rcc Post With 2100 Mm Length, 300mm Width And 50mm Thickness Planks Shall Be Use Of Different Heights.
- It Is Fixed In Column's 55mm Grew.
- Panel Shall Be Reinforced With 3 Roads High Tensile Steel 3mm/4mm Which Is Which Is Manufacturing With Stressing System And It Gives More Strength.

About Product :

Triranga Cement Product Is A Renowned Firm, Meeting Construction Related Demands Of Several Industries. We Are An Iso 9001:2008 Accredited Manufacturer And Supplier Of Precast Rcc Readymade Compound Wall. Our Products Are Manufacture Under Stringent Norms, And The Raw Material Procured From Reputed Manufacturers And Suppliers Are Accepted Through Rigorous Quality Control Norms. It Is Resist Against Chemical Attack, Weathering Action, Abrasion, Etc. All These Have Enabled Us To Maintain A Host Of Clients. Our Products Are Widely Demanded By The Patrons.



Application Areas :

- Compound Wall
- Security Cabin
- Labor Quarter
- Garden Curbing
- Footpath Curbing
- Industries Security Wall
- Bungalows Landscaping
- Party Plot Wall
- Plots Boundaries
- School Playground
- Temporary Offices for building construction
- Interior for Offices like Partitions & Cabins
- Water Parks
- Hotels & Resorts And Many more.....

General Characteristics:

- Maintenance Free
- Impervious to weather, water and termites
- Effective barrier against noise and wind
- Withstands ground movements
- Simple, rapid and clean installation
- Not any heavy equipment required for installation
- Modularized For Future Expansion
- Beautiful & Eye-catching Look For A Life Time (elevated)
- Less Space Is Utilized.

Advantages:

- **Less space is utilization** : We need less space in compare to other bricks/ordinary compound wall.
- **Speedy installation** : We can install it faster than our ordinary/brick's wall because it is prefabricated, so we can also change its location from one place to other place and again reinstall it.
- **Durability** : It is durable, it has long life with function of speedy installation and portability and It is fully RCC wall with prestress PCC Steel.
- **Reinstall** : It can be moved at any time and any place. (Movable)
- **Economy compared to conventional products** : RCC compound wall of Columns and planks, is so much economical.Because it doesn't take much more expenses in compare to other products'compound wall.

RCC Compound Walls V/s Brick Walls :

During the recent developments, importance of brick walls are getting lesser compared to RCC compound walls.Saturation point has come where now days people prefer our product to traditional brick walls. Last but not the least, following are some of the observations our teams have gained from various markets.

Sr No	Properties	RCC Boundary Walls	Traditional Brick Walls	Remarks
1	Construction Time (for 100 Meters Wall)	Constructed just within 3 days.	It takes at least 7 days to construct and another 7 days for water curing	RCC Compound walls save precious construct time
2	Strength	RCC Panels consist of high tensile wire at every 75 mm distance and can be cut only by mechanical means.	The weakest part of this wall is its 150 mm thick brick masonry which can be easily broken by ordinary hand tools.	Rcc Compound Walls Provide Better Security To Campus
3	Long Lasting	High durable as RCC panels are made from superior quality of concrete and steel materials.	Weak in nature as it depends on the quality of thickness, quality of sands, span of curing, the art of workmanship etc.	Rcc Compound Walls require almost nil maintenance and log lasting
4	Re-stability	Can be moved easily from one place to another without losing the strength and quality	Get broken easily during movement staring from destruction to reconstruction. Almost 50% get lost in terms of quantity and quality.	RCC walls get stabled quickly as if new walls are being made.
5	Repair Ability	In case of overturning failure a large Section of wall may damage and required almost new construction as repair and require several weeks time to repair.	In case of failure only few columns may be damage and require to be replaced only damage partition.	

Quality Assurance:

In order to retain clients' allegiance and have strongest defense against competition, we pay stress towards products quality. Superior quality Of cement and other material is sourced by us from reliable vendors for developing offered Precast RCC Folding Compound Wall, Precast Concrete Products and Prefabricated Cement Products. Every production stage takes place under the vigilance of quality controllers in sync with international norms. These quality professionals also gauges manufactured products, before making final dispatch so as to ensure their flawlessness. Our entire range is tested on the basis of its eco-friendliness, construction, durability, looks, designs and ease of installation. Due to these, quality focused measures and policies, we have gained ISO 9001:2008 accreditation Ref code : IS1343-19805.2.2

KEY HIGHLIGHTS

- Respect, Care & Rigor

R

Values Guide Triranga's Development

- Integrity
- Ethics
- Courage
- Empathy
- Openness
- Commitment



Our Mission:

- We are a prestigious firm, which works with the mission of providing high quality & eco-friendly products to patrons, attaining reputed position in the industry, meeting clients' needs and adding value to the community.
- We will continue to be a moving force in our Nation's progress.

Some Of Our Valued Customers:

- Rohadychempvt Ltd-solar Plant, Rajashthan
- Sriram Bio Genetics Ltd., Hyderabad
- Vraj Integrated Textile Park, Ahmedabad
- Gayatri Bio Organics Ltd., Hyderabad
- Reliance Ind. Ltd., Hajira
- Nirma Ltd., Ahmedabad
- Welspun India Ltd., Anjar
- Hotel Vishala, Ahmedabad
- Jayprakash Associates Ltd., Chapad
- Asia Motor Workers Ltd., Bhauchau
- Euro Ceramics Ltd., Bhachau
- S.s. White Technologies, Wadhvan-surendranagar.
- Nsl Textiles, Nsl Infratech, Hyderabad
- Dhaniya Seeds Ltd., Hyderabad.
- Dymes Engineers Pvt. Ltd, Hyderabad.
- Vasavadatta Cement (birla Group), Prop.
- Kesoram Industries Ltd., Hyrerabad, A.p. & Sedam, Karnataka.
- Coregreen Sugar & Fuels Pvt Ltd., Yadgir, Karnataka.
- Vasavadatta Cement,kesoram Industries, Hotagi Village, Solapur District. Maharashtra.
- Avon Organics Ltd., Solapur
- Gavi Sideshwara Steel(India) Pvt Ltd., Raydurg, Dist: Anantpur, A.p.



OUR PRESENCE

Ahmedabad - Gujarat

Bharuch - Gujarat

Chikhli - Gujarat

Nanded-maharashtra

Hyderabad - Telangana

Vijaywada - Andhra Pradesh

Bangalore - Karnataka

Hubli - Karnataka

Chennai - Tamilnadu

Ranchi - Jarkhand



MSME D & B D-U-NS ® NUMBER : 86-041-33990



Sujit Patel

9974125431

Sanjay Sorathiya

9909002005

Factory : Block-199, S. P. Ring road, Nr. HP Petrol Pump,
Opp. Hotel Way Wait, Bakrol - Visalpur Circle, Bakrol, Ahmedabad.